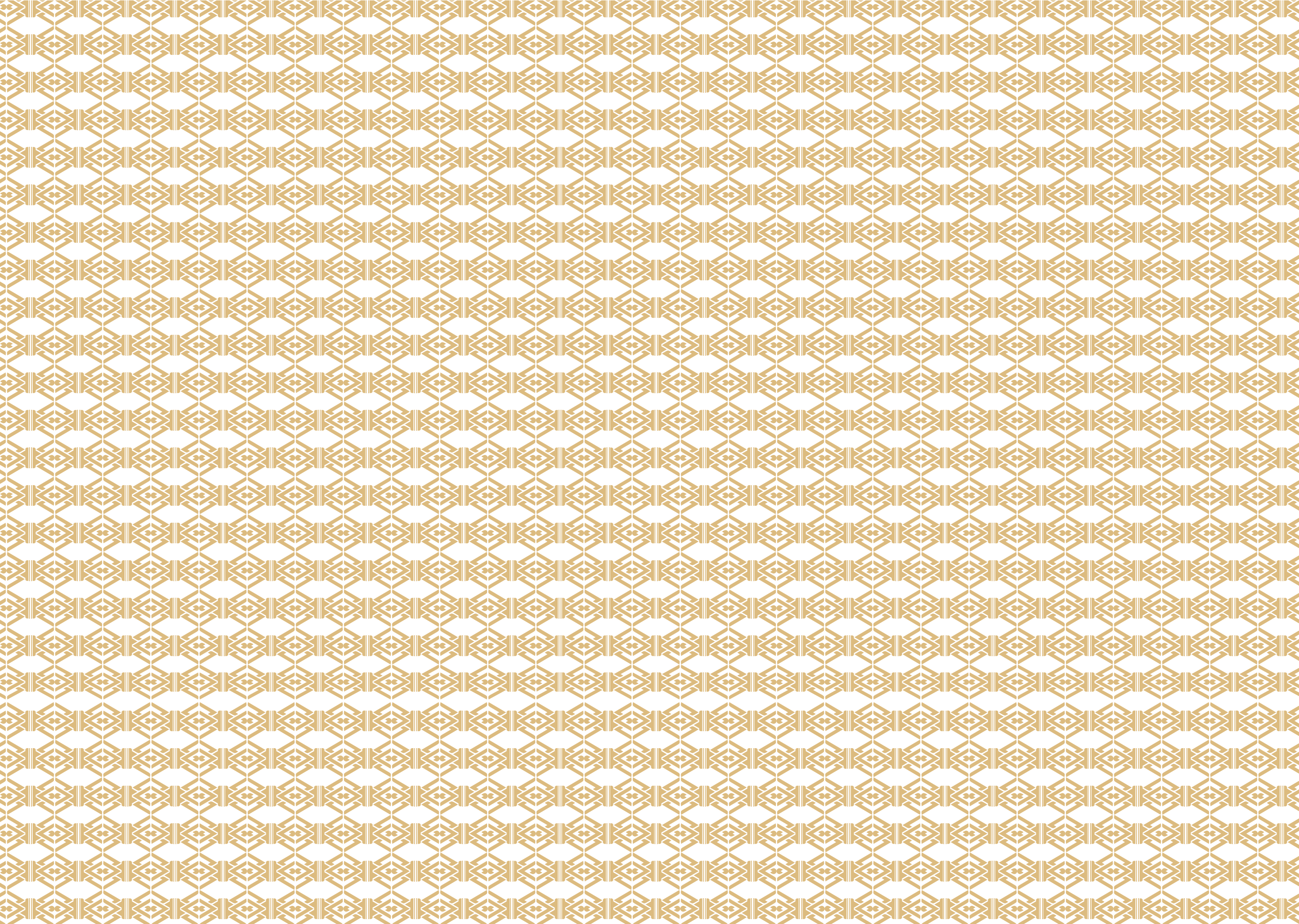




WHITE VIEW

Luxury Residence Marrakech





WELCOME TO MARRAKECH WELCOME HOME!

The Moroccan gem, where ancient history and modernity seamlessly converge in captivating harmony. Renowned for its vibrant medina, labyrinthine alleys, and lively souks, Marrakech captivates you with its unique cultural charm. The city is infused with vivid colors, exquisite flavors, and warm hospitality, providing an unparalleled living experience.

Beyond its rich cultural heritage, Marrakech also stands as a thriving economic hub. With an appealing and continuously growing real estate market, the city presents countless investment opportunities. Whether in upscale residential projects, flourishing commercial spaces, or innovative tourist initiatives, Marrakech positions itself as an ideal destination for those seeking to invest in a promising future.

By choosing Marrakech, you are embracing an exceptional quality of life, navigating between the charm of the medina and the emerging modern infrastructures. Let yourself be charmed by the magic of Marrakech, a city where every corner tells a story, and every investment promises a prosperous future.



WHITE VIEW

Luxury Residence Marrakech



Perfectly situated on Mohammed VI Avenue, just minutes away from the new Morocco Mall, White View Residence enjoys an exceptional location in the heart of Marrakech. This outstanding residential complex is designed to provide a delightful living environment, featuring green spaces, a swimming pool for both adults and children, a playground, and underground parking – all within a gated and secure area.

White View offers you the opportunity to own a high-end real estate from a diverse selection of apartments and garden-level units, meticulously furnished and equipped with careful attention to detail. Our goal is to offer you a living space where comfort, convenience, and well-being flawlessly blend. Don't miss out on the chance to become a homeowner in Marrakech.



A RESIDENCE DESIGNED FOR YOUR WELL-BEING.



Private and
secure residence



Prestigious and growing
neighborhood



Swimming pool
for both children
and adults



Underground
parking with
designated spaces



High-quality
finishes



Playground
for children



Strategic
location



Garden and
green spaces





LOCATION PLAN

Positioned along the renowned Mohammed VI Avenue, White View Residence enjoys a privileged location in Marrakech. Composed of 118 high-end apartments, this residence is situated in a prestigious neighborhood surrounded by luxury hotels, golf courses, and shopping centers.

Treat yourself to a living environment that is both tranquil and exotic, offering panoramic views over the majestic Atlas Mountains, while remaining in close proximity to the city's amenities and entertainment options. Enjoy the convenience of nearby cafes, restaurants, shopping malls, nightclubs, swimming pools, golf courses, and more.



Morocco Mall
3 min



Al Mazar Mall
3 min



Menara Mall
8 min



Golf courses
6 min



Hivernage neighborhood
8 min



Guéliz neighborhood
10 min



Jemaa el Fna square
10 min



Majorelle Garden
17 min



Marrakech Railway Station
13 min



Marrakech Airport
13 min



Guéliz

Médina

Hivernage

Menara Mall

Golf Amelkis

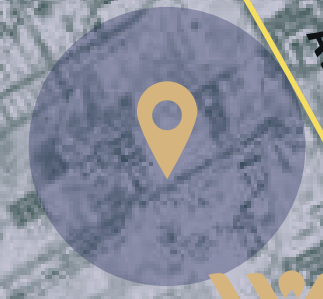
Aéroport

Morocco Mall

Al Mazar

Al Maaden Golf

Oasiria




WHITE VIEW
Luxury Residence Marrakech

Av Mohamed VI

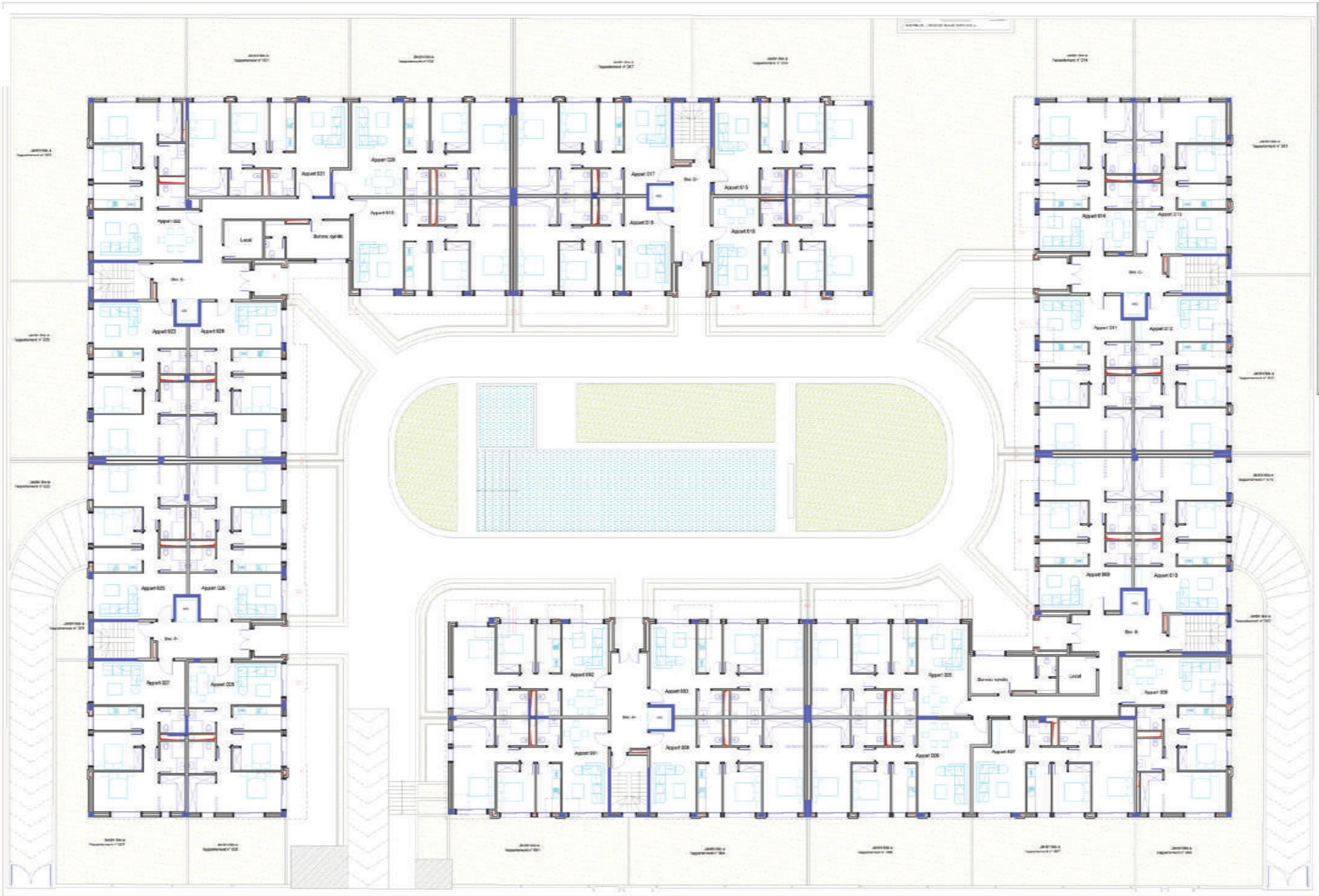
Argan Golf Resort

Noria Golf Club



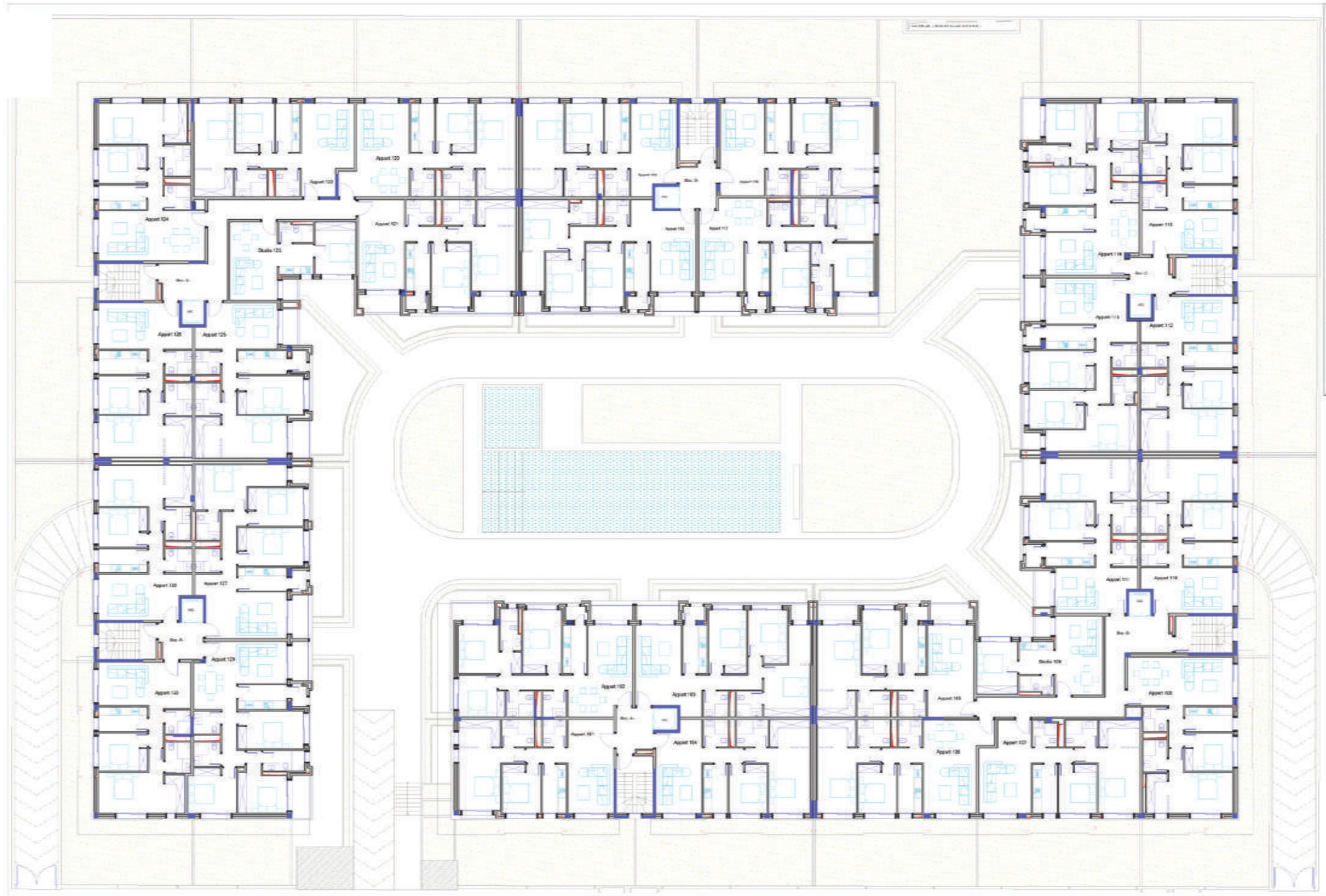
GARDEN LEVEL

	N° Appart	Surfaces	Garden
Bloc A	Appart 001	88,24	66,04
	Appart 002	87,25	x
	Appart 003	84,84	x
	Appart 004	85,85	65,41
Bloc B	Appart 005	87,46	x
	Appart 006	92,36	60,34
	Appart 007	87,78	60,29
	Appart 008	92,83	75,6
	Syndicate office	21,84	x
Bloc C	Local	10,20	x
	Appart 009	85,30	x
	Appart 010	84,97	42,94
	Appart 011	85,52	x
Bloc D	Appart 012	84,84	76,94
	Appart 013	84,33	151,95
	Appart 014	86,80	42,30
	Appart 015	86,90	78,37
Bloc E	Appart 016	89,22	x
	Appart 017	84,72	76,65
	Appart 018	85,88	x
	Appart 019	87,37	x
	Appart 020	92,17	70,59
	Appart 021	87,58	70,77
	Appart 022	94,15	154,51
	Syndicate office	21,56	x
	Local	10,17	x
	Appart 023	86,17	76,10
Bloc F	Appart 024	85,31	x
	Appart 025	86,32	39,82
	Appart 026	85,60	x
	Appart 027	85,69	75,23
	Appart 028	86,86	36,11



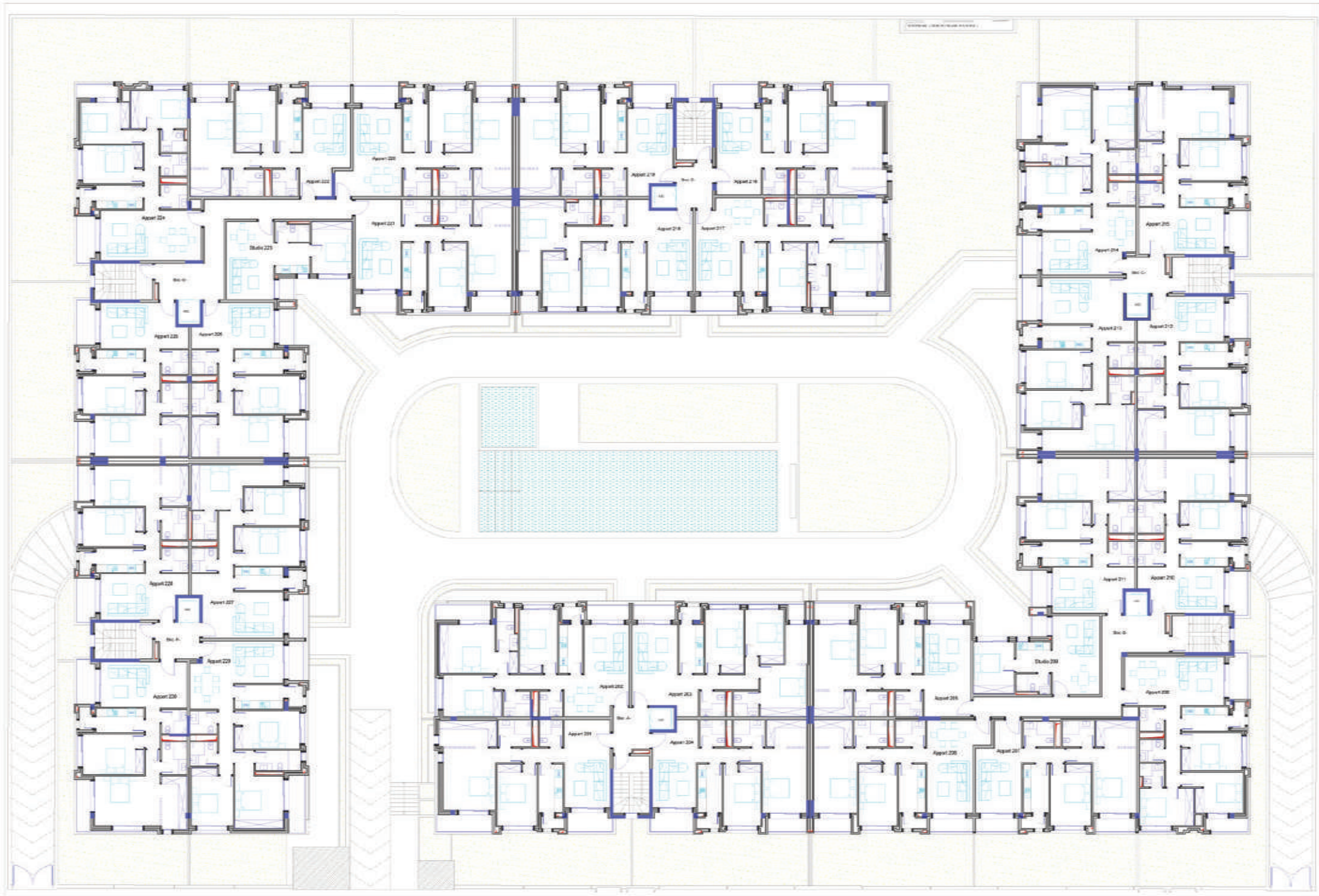
GROUND FLOOR

	N° Appart	Surface y /c terrace	terrace
Bloc A	Appart 101	90,53	2,44
	Appart 102	115,56	11,31
	Appart 103	111,17	7,99
	Appart 104	85,71	X
Bloc B	Appart 105	103,90	10,44
	Appart 106	92,22	X
	Appart 107	87,64	X
	Appart 108	92,70	X
Bloc C	Studio 109	51,43	2,37
	Appart 110	84,83	X
	Appart 111	98,77	9,40
	Appart 112	84,70	X
Bloc D	Appart 113	112,51	8,65
	Appart 114	117,56	10,97
	Appart 115	82,74	X
	Appart 116	88,55	1,79
Bloc E	Appart 117	115,85	9,92
	Appart 118	110,51	8,00
	Appart 119	85,58	X
	Appart 120	92,03	X
Bloc F	Appart 121	103,77	10,85
	Appart 122	87,47	X
	Studio 123	51,28	2,34
	Appart 124	93,98	X
Bloc F	Appart 125	98,58	9,22
	Appart 126	86,03	X
	Appart 127	112,57	8,67
	Appart 128	86,18	X
Bloc F	Appart 129	117,54	11,04
	Appart 130	84,10	X
	Escalier - Asc- Circulation	179,76	X



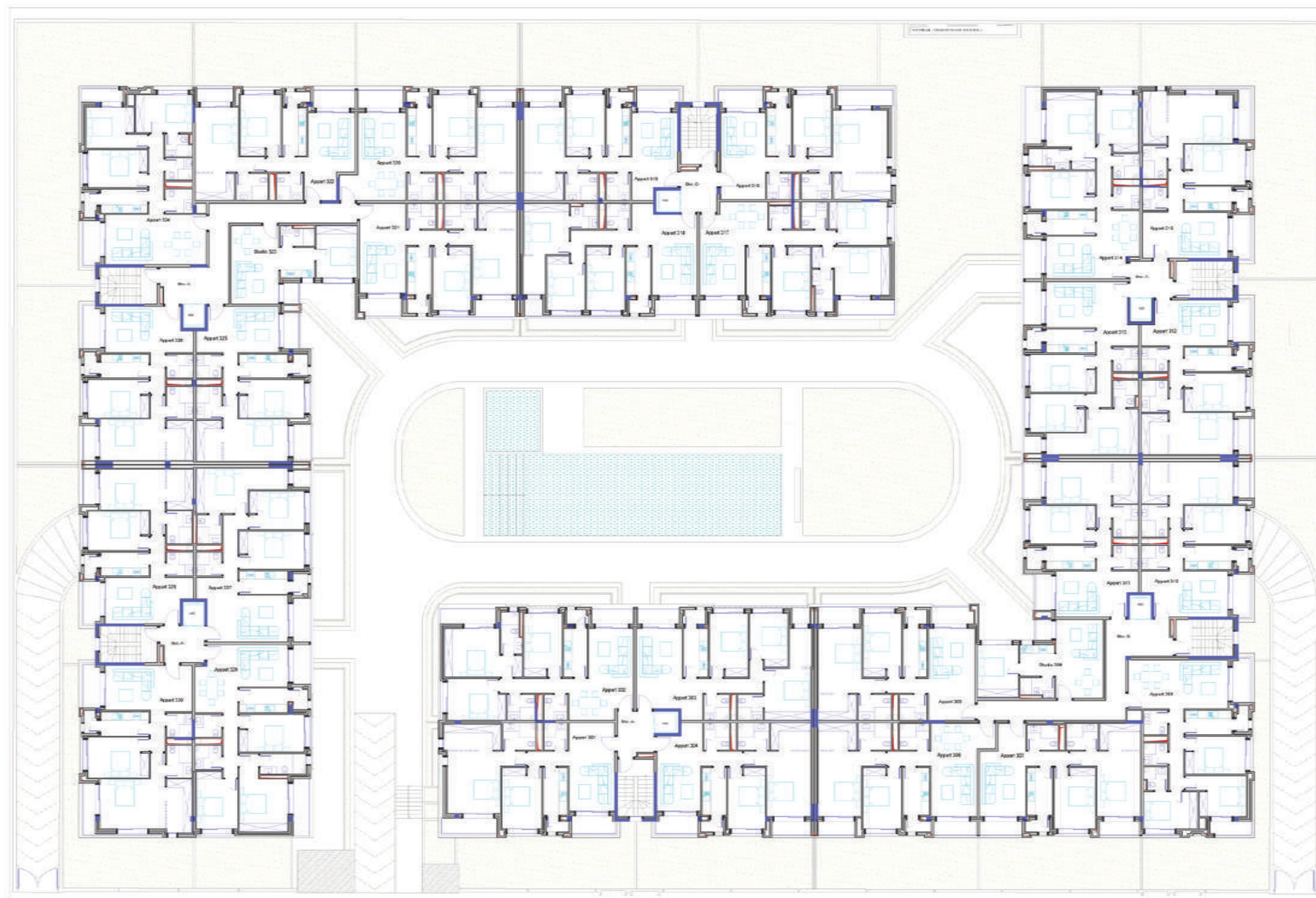
1st FLOOR

	N° Appart	Surface y /c terrace	terrace
Bloc A	Appart 201	112,47	13,09
	Appart 202	123,62	11,70
	Appart 203	109,90	6,73
	Appart 204	99,04	8,94
Bloc B	Appart 205	102,96	9,50
	Appart 206	105,54	7,51
	Appart 207	100,95	7,58
	Appart 208	116,21	11,00
Bloc C	Studio 209	51,47	2,37
	Appart 210	98,19	8,83
	Appart 211	98,21	8,84
	Appart 212	98,06	8,86
Bloc D	Appart 213	110,76	6,91
	Appart 214	122,97	10,54
	Appart 215	107,70	11,82
	Appart 216	111,93	13,81
Bloc E	Appart 217	123,55	10,09
	Appart 218	108,33	5,82
	Appart 219	99,55	9,55
	Appart 220	106,08	9,77
Bloc F	Appart 221	102,84	9,92
	Appart 222	100,83	9,26
	Studio 223	51,28	2,34
	Appart 224	118,23	11,06
Bloc F	Appart 225	98,00	8,64
	Appart 226	100,06	9,53
	Appart 227	110,86	6,96
	Appart 228	100,24	9,51
Bloc F	Appart 229	122,91	10,64
	Appart 230	109,86	12,4
	Escalier - Asc- Circulation	179,76	



2nd FLOOR

	N° Appart	Surface y /c terrace	Terrace
Bloc A	Appart 301	110,08	10,71
	Appart 302	124,43	12,80
	Appart 303	111,16	8,12
	Appart 304	97,56	7,46
Bloc B	Appart 305	103,89	10,57
	Appart 306	104,34	6,30
	Appart 307	99,72	6,35
	Appart 308	114,01	8,80
	Studio 309	51,47	2,37
	Appart 310	96,45	7,09
Bloc C	Appart 311	98,77	9,68
	Appart 312	96,31	7,11
	Appart 313	112,70	9,20
	Appart 314	125,54	13,39
	Appart 315	105,39	9,51
Bloc D	Appart 316	108,88	10,76
	Appart 317	126,20	13,02
	Appart 318	110,51	8,14
	Appart 319	97,13	7,13
Bloc E	Appart 320	103,49	7,18
	Appart 321	103,77	10,99
	Appart 322	98,60	7,02
	Studio 323	51,28	2,34
	Appart 324	115,72	8,52
	Appart 325	98,58	9,50
	Appart 326	97,63	7,10
	Appart 327	112,77	9,22
Bloc F	Appart 328	97,80	7,07
	Appart 329	125,50	13,5
	Appart 330	106,87	9,41







T3 APARTMENT


The T3 type apartments are available with areas ranging from 82 to 112 m2, featuring two bedrooms, a living room, a fully equipped modern kitchen and two bathrooms. These residential spaces boast high-end finishes, showcasing premium paint, brand-name plumbing and sanitary equipment along with the use of premium materials and top-notch amenities.





 From 82 to 112 m2

 2 Bedrooms

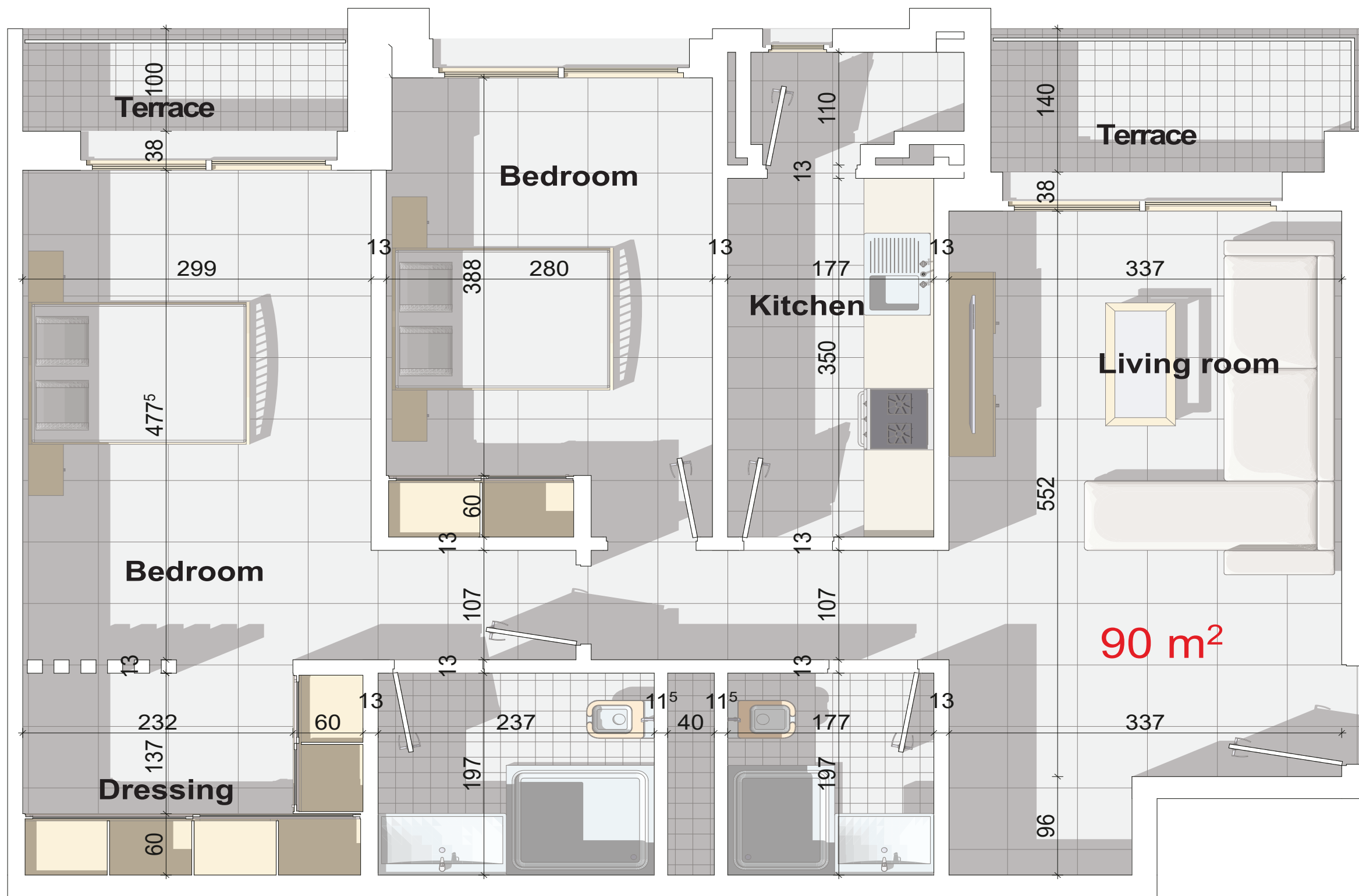
 1 Living Room

 1 Kitchen

 2 Bathrooms

 Parking Space





T₃ APARTMENT

TYPE 1

Surface area De 82 à 126m



T4 APARTMENT

Enjoy exceptional comfort of our T4 apartments, offering generous spaces ranging from 85 to 126 m². Each unit features three bedrooms, a living room, a fully equipped modern kitchen, and two bathrooms. These residential spaces stand out with premium finishes, including top-quality paint, branded plumbing and sanitary equipment, the use of high-quality materials and upscale amenities, ensuring an elegant and refined life style.



From 85 to 126 m²



3 Bedrooms



1 Living Room



1 Kitchen

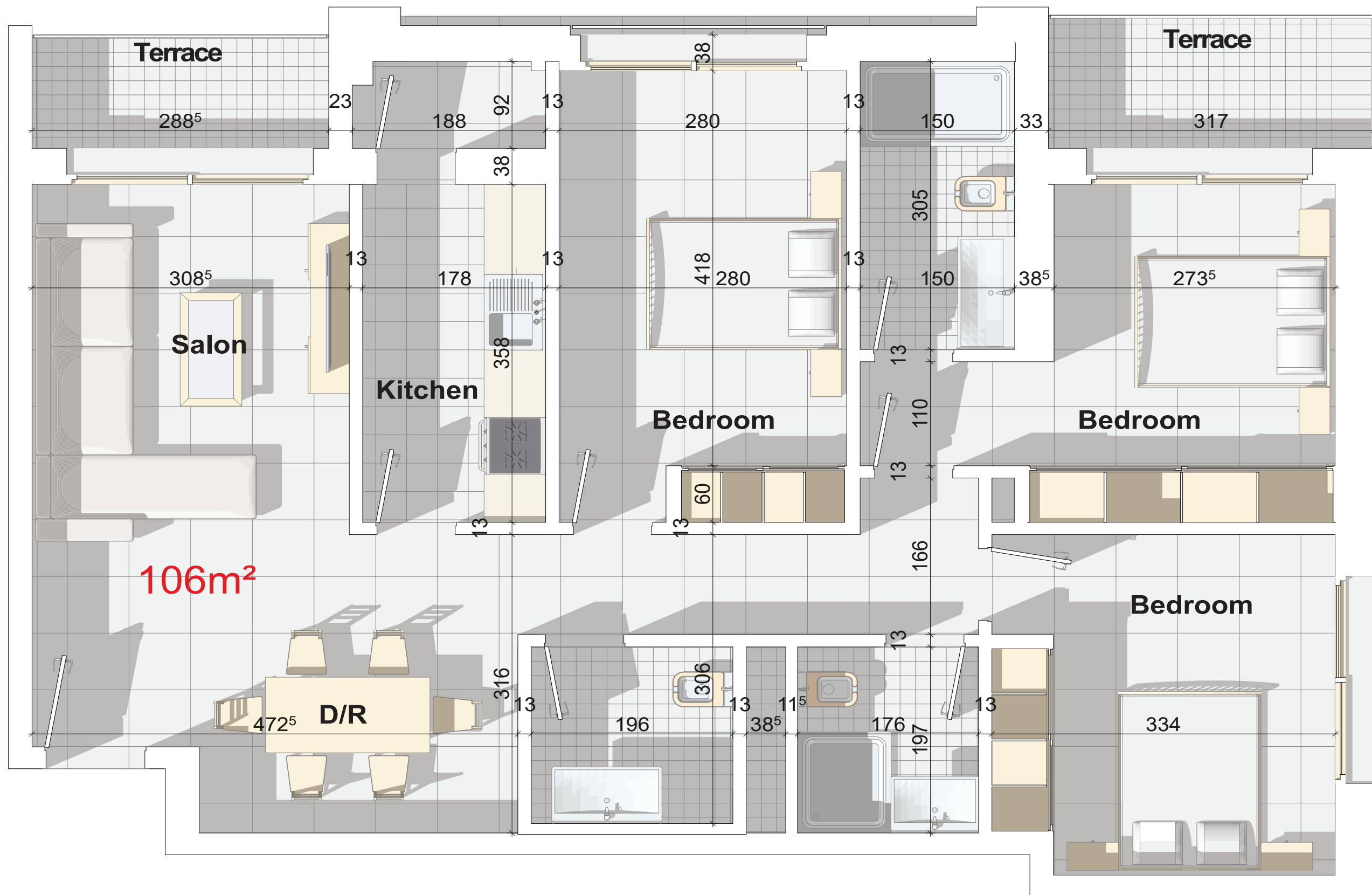


2 Bathrooms



Parking Space

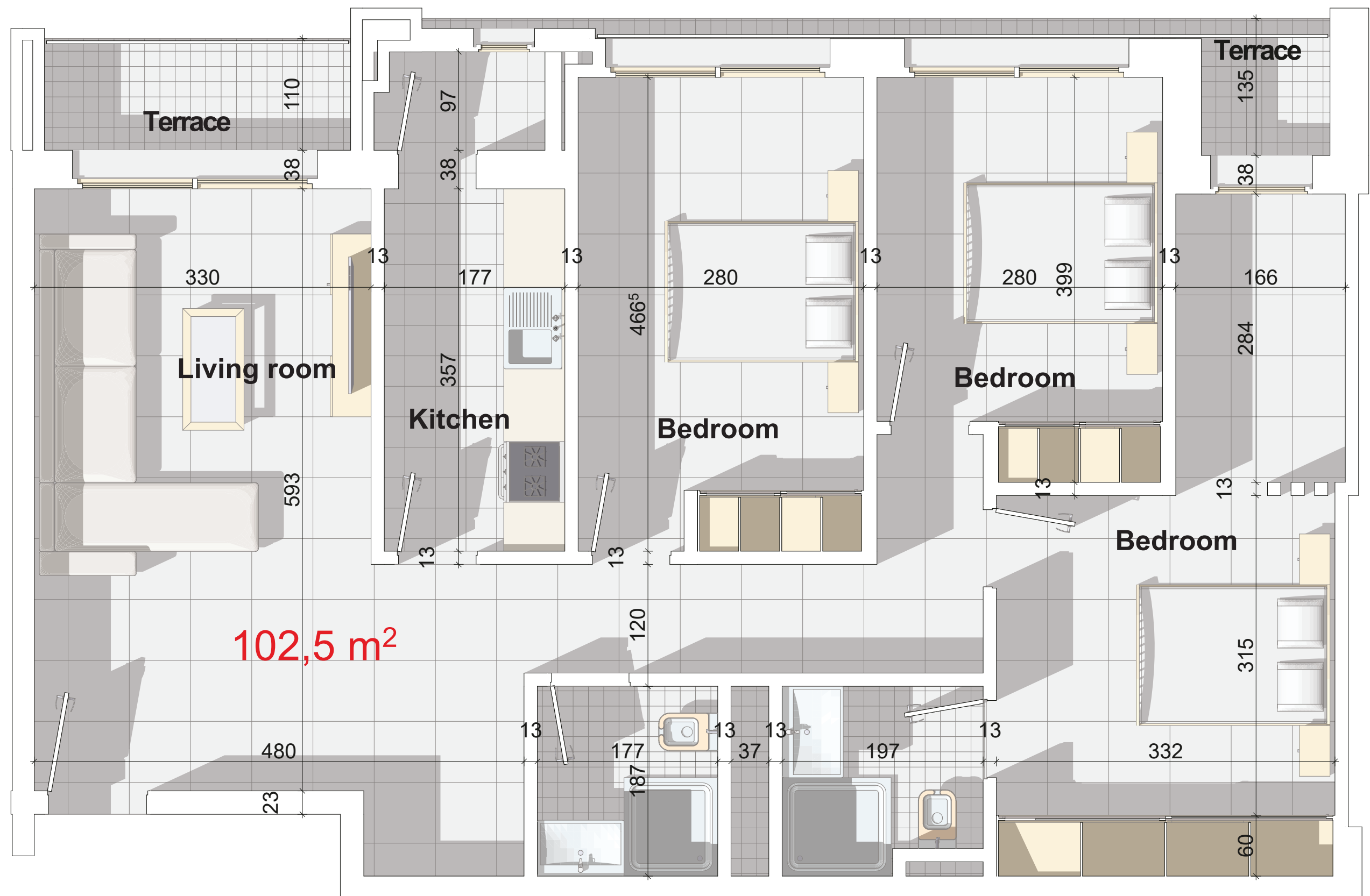




T4 APARTMENT

TYPE 1

Surface area De 82 à 126m



T4 APARTMENT

TYPE 2

Surface area De 82 à 126m



GARDEN-LEVEL

Discover the ultimate well-being in our Garden-Level apartments, providing spaces ranging from 84 to 94 m2, with the exclusive advantage of a private garden. These exceptional residences feature two bedrooms, a living room, a fully equipped modern kitchen, and two bathrooms. The distinctive element of these living spaces is the presence of a private garden, creating a personal oasis within the confines of your own home.



m² From 84 to 94m2

m² From 36 à 154 m2

2 Bedrooms

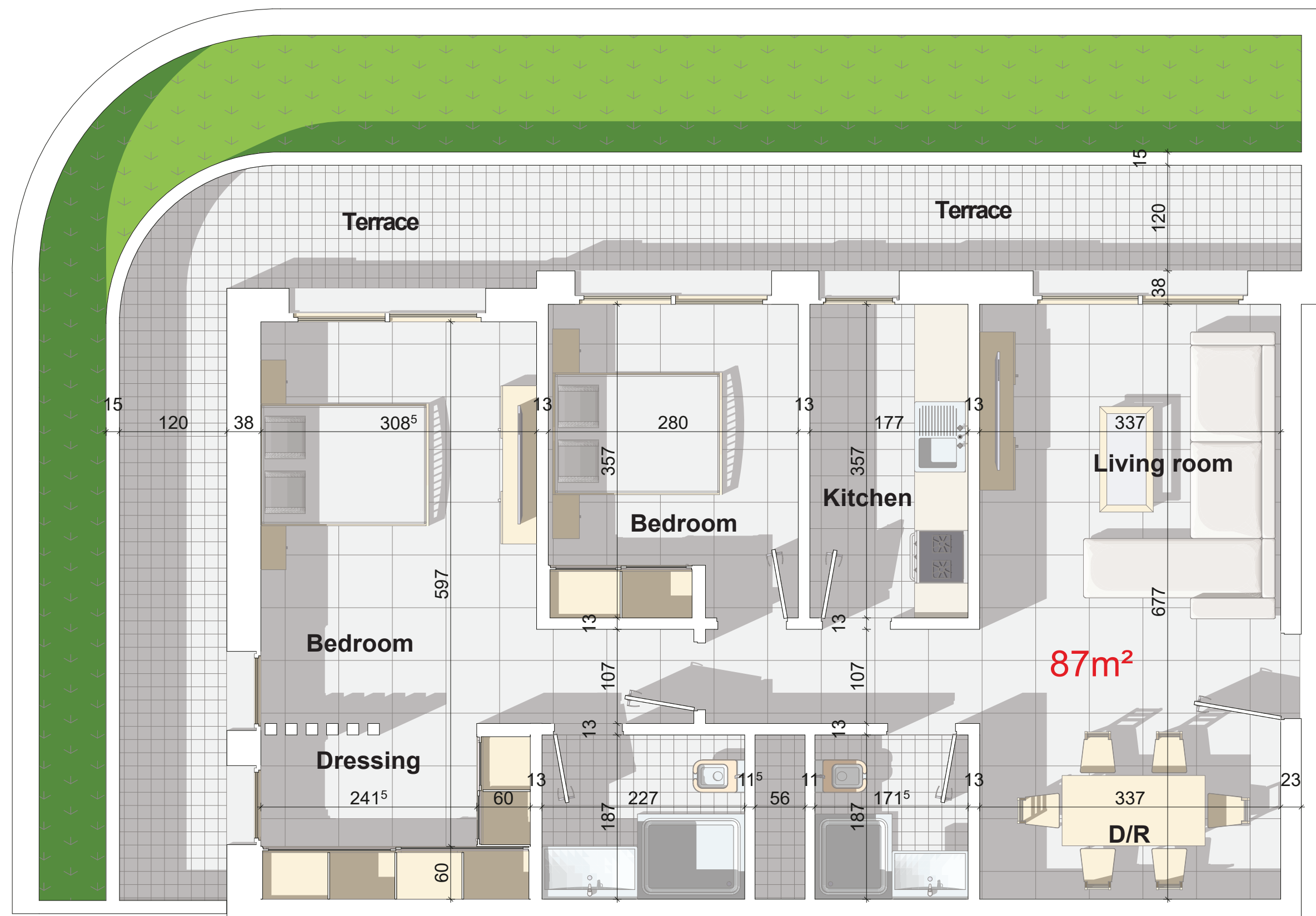
1 Living Room

1 Kitchen

2 Bathrooms

Parking Space





GARDEN-LEVEL

TYPE 1

Surface area De 84 à 94m²
Garden De 36 à 154 m²



GARDEN-LEVEL

TYPE 2

Surface area De 84 à 94m²
Garden De 36 à 154 m²



CONTACT

Our sales team is at your service to introduce you to the White View residence project and address all inquiries you may have.

contact@whiteview.ma

www.whiteview.ma

White View Residence Mohammed VI Boulevard,
40 000 Marrakech, Morocco.

Follow Us

[@whiteviewmarrakech](#)



